

Standard ERP

Rentals & Assets



Graphical scheduling

Maximize resource utilization with drag-and-drop graphical scheduling.

Asset depreciation

Depreciation models are automatically calculated for accounting.

Service and maintenance

Ensure your assets are always maintained and ready.

Multiple asset locations

Get a real-time overview of all assets in multiple locations and their status.

Real-time barcode and serial number processing

Use barcode devices and assign serial numbers for efficient processing.

Perfect fit for a variety of rental applications

Standard ERP accommodates the needs of almost any rental scenario.



The World's Best Integrated Business Platform

Streamline your rental operations and efficiently manage your assets

A specialized rental module integrated with invoicing, accounts and a variety of other business tasks and routines.

Standard ERP offers an integrated solution for the rental and hire industries, designed for all companies that rent, lease, hire and even lend assets. It is fully integrated with all Standard ERP components, features such as:

- Graphical scheduling for your rental fleet.
- Asset depreciation.
- Asset servicing and maintenance.
- Invoicing through accounts.
- CRM system to track rental customer information, before and after the sale.
- Email and fax for all records and communications.

Mobility

Standard ERP's Rental features can be accessed from almost any mobile device using a complete client, as opposed to role-based apps; specified features can even be customized for your business. While mobile, you can access information such as contacts and inventory, make calls from server-based data, input all data such as Purchase Orders, new rentals and swap-outs, and even open external files.

If you store contact information on your server, you can access your entire register feeling secure in the knowledge that if a device is misplaced or lost, this data cannot be accessed by anyone else.

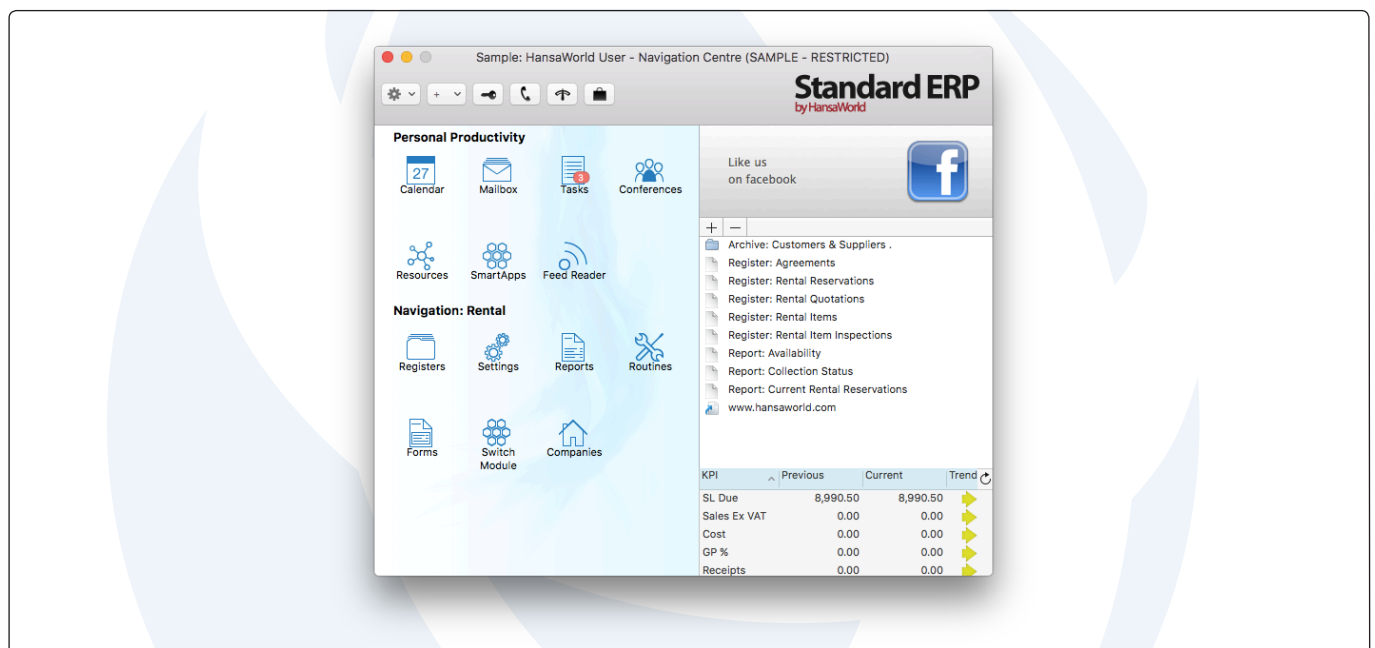
Agreements and Reservations

Rental agreements include all assets a customer decides to rent. Standard ERP will display all assets ready for use, the schedule of availability for future use, the expected return date and time, and the current physical location of any given item. Assets can also be designated to a rental agreement using the drag-and-drop feature. Standard ERP supports individual selections and the creation of bundles for items that will be rented together.

Assistance is also available for categorizing large rental fleets into logical groups for faster data entry and efficient reporting. You can indicate items as being for rent, chargeable, disposable, third-party hires or subcontractors.

Each rental agreement can detect standard invoicing terms and patterns, including:

- Invoices raised at the end of any set number of days or months, or just when rental agreements have concluded.
- Invoicing in advance or in arrears.
- Automated invoice date handling corresponding to rental periods (specify number of days before or after the period to which the invoice relates).
- Calculations based on specified days, working days or patterns of working days agreed specifically with each customer. For example, a customer may not be charged for an entire two week period during Christmas while their site is closed, but another might only avoid charges during bank holidays.



- Sets of standard terms and conditions can be created and applied to a rental agreement for automatic printing.

Allocation

Standard ERP provides an interactive graphical scheduling system, a comprehensive tool allowing the user to be far more efficient with rental tasks. Different groups of rental assets, for example, can be viewed together to immediately confirm availability. Scheduling conflicts can be resolved by dragging reservations and dropping onto individual assets. At the point of allocation, the user can link any accessories required and determine whether these are disposable, chargeable, or must be returned.

Preparation & Inspection

A rental fleet can be grouped into different categories, allowing for easier data entry and management. Users can specify how much time per group assets require, if any, for preparation prior to dispatch, as well as time for inspection and maintenance upon return. In accordance with these user-defined specifications, Standard ERP will automatically calculate the scheduling demands for servicing and inspection. These activity types are displayed with colors different from the scheduled rental for precise organization.

During inspection, charges can be assigned to the relevant record. Depending on the result of the inspection, the status of the asset will be automatically set as active or inactive and, if necessary, transfer the rental to your service department for maintenance.

Off-hires, Collections and Swap Outs

Standard ERP supports your business whether customers return the rentals, rentals are retrieved from them, or a third party performs the collection. Design your own forms to support the

collection process and add automatic charges such as transportation. Any items missing at the time of return can be indicated on the Collection, and charged appropriately.

Easily manage the exchange of faulty items while accurately tracking which assets are on-site and, based on Service Orders, which are due for maintenance.

Invoices can be raised from individual agreements, or in batches. The latter is appropriate for companies with long rental periods, such as plant hire. Invoices can be designed to any format you require, and different designs can be issued to different groups of customers.

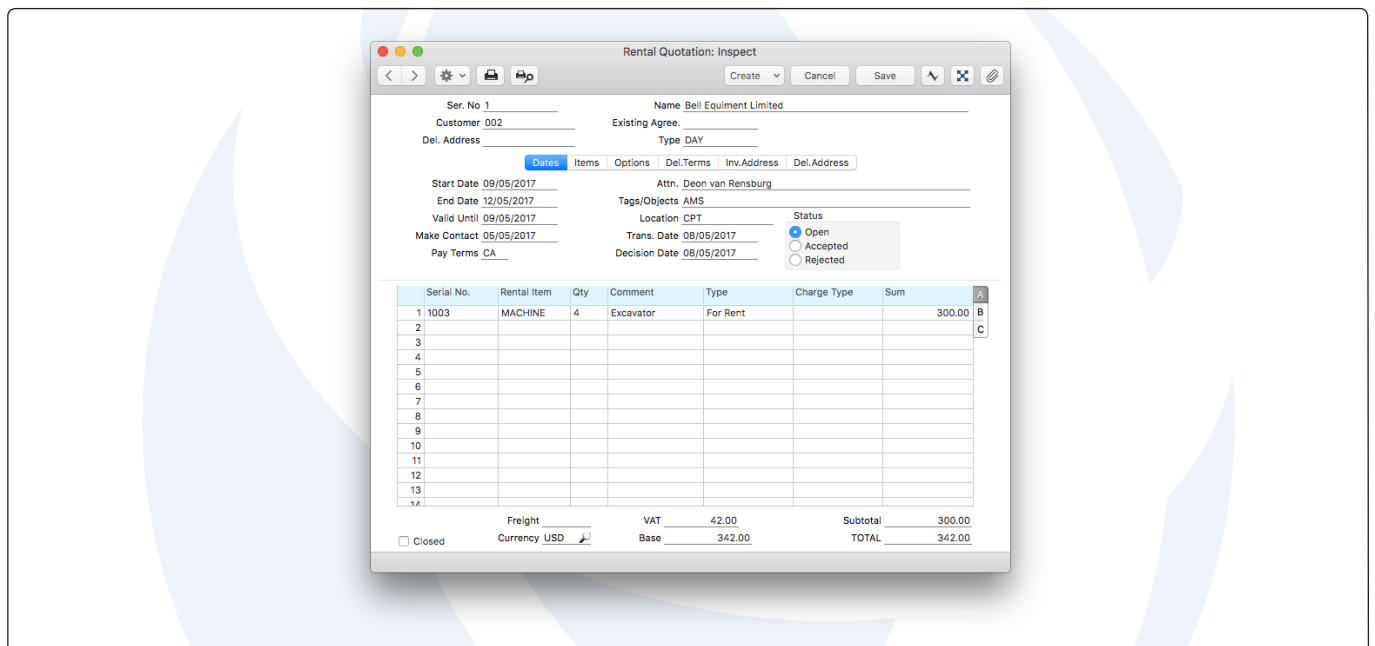
“Everything works in a truly integrated manner: inventory that we buy can be automatically created as assets if we choose to add them to the rental fleet, and then automatically depreciated.”

- Roger Cherowbrier, Topcon

Multiple Locations: Depots and Customer Sites

Standard ERP is ideal for companies with multiple locations, particularly due to its strength in wide-area networking. All branches can access the same data and determine not just fleet availability at their own location, but asset status across all locations. Use the transfer feature for movements between locations, and include the cost for each transfer as well. This includes inventory control for accessories at each location, where items need to be sent for maintenance, and the location where actual inventory is maintained (i.e. for companies that sell and rent).

If your customers have multiple sites, and require varied methods of invoicing for different locations, Standard ERP accommodates these demands seamlessly.



Assets

If serial numbers for assets need to be established, Standard ERP can automate this task when registering the item into the inventory. After listing items into the inventory, decide whether to transfer them to your rental fleet, using a single entry to make the transfer which automatically generates individual Asset records for each serial numbered item.

Standard ERP supports many different depreciation models, automated directly into the accounts with the option for an alternative tax reporting method.

Other Detailed Features

- Barcode printing on any form, including asset labels.
- Real-time barcode data entry from barcode scanner attached to a device on your network.
- Serial number based reporting with a complete historical view of the asset, from purchase to rental records, ongoing maintenance, and eventual secondhand sale.
- Multi-currency - all previously mentioned features support dual base and multiple currency reporting in-line with Standard ERP functionality. Invoice in whichever currency you want in one location while overseas subsidiaries can report in an alternative group currency.
- Multi-language - all documents in Standard ERP support multilingual use.

Integrated Business Platform

Standard ERP is an integrated business platform, offering solutions to accommodate almost every department in a small or midsize business. All of our solutions are offered in a single appli-

cation with full interaction between each integrated component. As a result, if you look solely at the Rental module, you may miss other key features and benefits within Standard ERP:

- A system architecture that reduces reliance on IT hardware and maintenance allowing for greater focus on your business instead of the technical infrastructure.
- Users have visibility of data from other areas (depending on access rights), which enriches their job experience. For example, credit controllers can see promises made by salespeople and problems with service management that might be holding up payments.
- Automated tasks can source from various departments. A marketing department, for example, can create automated mailshots based on customers who have not yet purchased a specific product or service.
- Comprehensive reporting is enhanced with more data from different parts of the business. For example, it is easy to produce Profit and Loss reports and Balance Sheets that include committed costs and GRN accruals.
- With a universal approach in Standard ERP, training is faster and far more effective than that of companies with multiple systems built with varied structures.

Mobile Solutions and Wide-Area Networking

Standard ERP is available, in its entirety, to users logging in from anywhere in the world on almost any device. Users can work from home or on the go, logging in with any internet connection, from ethernet to wireless connections and mobile data networks. Devices include laptops, tablets, mobile phones - whether they're running macOS, iOS, Windows, Android, or a variety of smaller form-factor barcoding solutions running the same operating system. Users can run any of Standard ERP's standard or customized reports in real-time, and manage any data record.

Rental Reservation: New

No. 2 Agreement No 1 Status CR Adv. Price Details
Serial No. 1098020918304 Quantity 1 Type DAY
Item Code MACHINE Description Excavator
Del. Address Contact John
Cust. Ord No. Salesman AMS

Dates Accessories Periodic Charges Dealer Status
Start Date 02/05/2017 End Date 05/05/2017
Location Tags/Objects

Additional Items	Qty	Comment	Serial No.	Type
1 MACHINE1	1	Daily Rental Charge for Excavator	10980209183048238	For Rent
2				
3				
4				
5				
6				
7				
8				
9				
10				
11				
12				
13				
14				
15				
16				
17				

Done

This breaks down the walls of your operation, allowing users to be productive wherever they are.

Standard ERP Vertical Solutions

Standard ERP is the perfect system for a range of industries. The solutions we offer to each are what we call 'vertical solutions' and Standard ERP offers more than fifty.

Standard ERP for Rental is an ideal vertical solution for rental markets such as:

- Medical Equipment
- Leisure and Sports Equipment
- Power Tools and Construction Equipment
- Car and Bus Rental
- Audio, Video, Light and Multimedia Equipment
- Motor and Sail Boats
- Air Conditioning
- Exhibition Equipment
- Office Furniture and Equipment
- Production Machinery
- Cleaning Machinery
- Bicycles and Recreation

Versatility

Standard ERP is perfect for most companies, from small first-time users to larger enterprises needing an integrated solution for all their business requirements - it's as simple or as sophisticated as you make it.

Built-in:

- Customer Relationship Management (CRM)
- Email
- Intranet
- Document Management
- Webshop
- Multi-user Calendar

International:

- Multi-currency
- Dual reporting currencies
- Available in over 30 languages
- Localization

Future-safe solution:

- Mixed platform
- Cloud hosting and on-premise servers
- Hundreds of thousands of user years
- Easy to upgrade

The screenshot shows a software window titled "Item: Update". At the top, there are navigation buttons: "<", ">", a gear icon, and "Create", "Cancel", "Save", and a close button. Below this, the form is organized into several sections. The top section contains "No. MACHINE" and "Group RENT". The "Description" field is filled with "Excavator". There are checkboxes for "Closed" and "Not For Sales". A tabbed interface is visible with "Pricing" selected, and other tabs include "Stock", "Warehouse", "Costs", "Recipe", "A/C", "Varieties", "Texts", "Cost Model", "User Values", "Notes", and "BI". The "Unit" is set to "HRS". The "Base Price" is "200.00" and the "Base Price Change" is "02/05/2017". The "Item Type" section has radio buttons for "Plain", "Stocked Item" (which is selected), "Structured Item", and "Service". There is a checkbox for "Treat Item as Material on Project". A small image of an excavator is shown with an "Add picture" button below it. The "Serial Number Tracking" section has radio buttons for "None" (selected), "Unit Number", and "Batch Number". There is a checkbox for "Do not Require Batch No. on POS Invoice". The "Default Order Type" is set to "Normal". At the bottom, there are fields for "Environment Tax per Kilo", "Alcohol %", "Conversion 1", and "Conversion 2".

Modules

- Additional Consolidated companies
- Additional Multi-user companies
- Additional Single user companies
- Assets
- Business Alerts
- Business Intelligence
- Calendar
- Cash book
- Checks
- Email and Conferences
- External Email
- Consolidation
- Contracts
- Course Booking
- Credit Management
- CRM
- Customs
- Data Integrity
- EDI
- Expenses
- General Ledger
- Hotel
- Human Resource Management
- Integration
- Inter Company
- Internal Inventory
- Inventory
- Jewelry
- Job Costing
- KPI
- Limited Access
- Loans
- MRP
- Payables
- Point of Sales
- POS Offline
- Pricing
- Print Servers
- Production
- Productivity
- Purchase Orders
- Quotations
- Receivables
- Rental
- Report Generator
- Resource Planning
- Restaurant
- Resort
- Sales Orders
- Service Orders
- Share Trading
- SmartView
- System
- Task Manager
- Telephony
- TimeKeeper
- User Settings
- Warehouse Management
- Webshop and CMS
- World Bank Reporting

Technologies

- Additional Language Interface
- Business Communicator Asterix
- Business Communicator Intelligent Routing
- Business Communicator TAPI
- Database Accelerator
- Database Maintenance
- HAL
- Local Mailbox
- Real-time Interfacing Toolkit
- Remote Backup
- Massive Cache
- Native SQL
- SQL Shadowing
- Tapi Gateway
- Wide-area Networking

Internet Services

- Address Lookup
- Credit Card Payment
- Credit History
- e-Invoicing
- Electronic Bank Services
- Electronic Sales Tax Return
- Exchange Rate Lookup
- Postcode Lookup

Company Profile

HansaWorld is a leading software house providing a full suite of Enterprise Resource Planning and Customer Relationship Management products that delivers the flexibility required by today's businesses.

The group employs more than 300 staff with a strong network of subsidiary companies and distribution partners on all continents. This network enables us to offer international implementation in over 30 languages with country specific localizations. The products are easy to use and available on all smartphones, tablets and desktops including Mac, iPhone and iPad.

HansaWorld continually invests in Research and Development to provide innovative and future proof products to our customers.

As recognized innovators for over 30 years, HansaWorld shows continued technological leadership in the international business software industry.

More than 550,000 companies trust us with their business critical information.

Product Strategy

Standard ERP's advanced and successful user interface was first developed for Apple Macintosh in 1988. In 1994, when the program was ported to Windows, it had already been proved by thousands of users. HansaWorld's experience with international sales and modern technology puts it in the perfect position to meet the challenges of the next decade.

HansaWorld provides a wide range of technologies for e-business including internal and external email, several webshop solutions and full clients for all major tablets. In addition, HansaWorld can help to build a corporate portal. Standard ERP is developed using C++ as its programming language, and proprietary technology for database design and for network communication. This allows HansaWorld to have the same products available for several different operating systems, each version optimised for maximum performance.

Currently Standard ERP is available for Windows including Windows CE devices up to Windows 8 tablets, Mac OS X, all iOS devices (iPod Touch through to iPad), Linux and AIX, all browsers, and Google Android.

Windows XP, Windows CE and Windows 8 are registered trademarks of Microsoft Corporation. Apple Macintosh, Mac OS and OS X, iOS, iPod Touch and iPad are registered trademarks of Apple Computer Inc. AIX is a registered trademark of IBM Corporation. Google Android is a registered trademark of Google Inc. Copyright HansaWorld Ltd.

Certified HansaWorld Business Partner:

